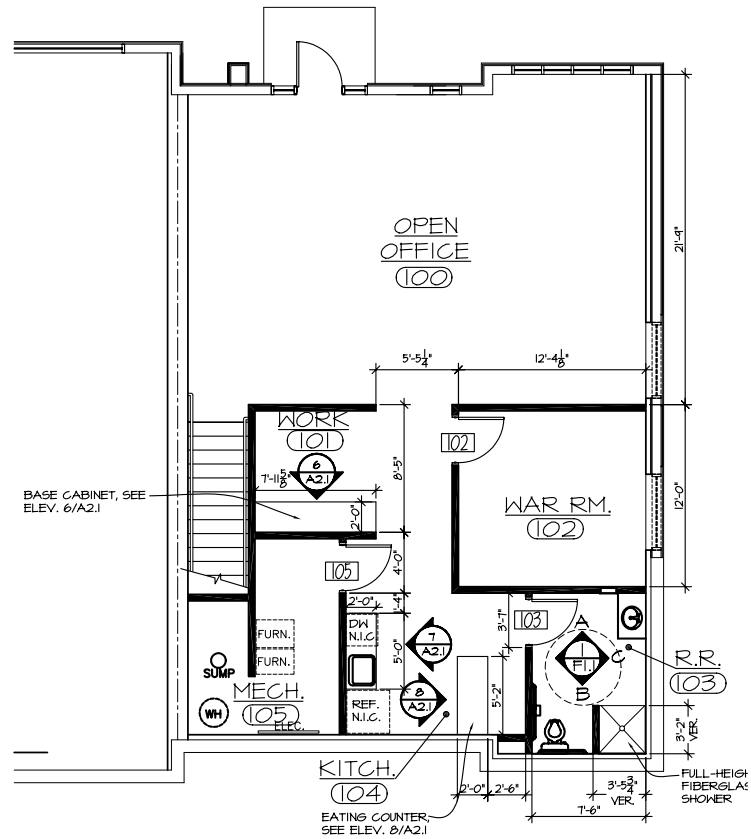


FLOOR PLAN MAIN LEVEL  
SCALE: NONE



FLOOR PLAN LOWER LEVEL  
SCALE: NONE



GENERAL NOTES

1. REQUIRED MECHANICAL AND ELECTRICAL BY OTHERS.
2. APPLIANCES, FIXTURES, AND EQUIPMENT BY OTHERS.
3. INTERIOR GYP. BD. WALL THICKNESS SHOWN AT 4 1/2" TYP. (3 5/8" METAL STUDS @ 16" O.C. W/ 5/8" GYP. EA. SIDE).
4. TOILET ACCESSORIES AND CLEARANCES PER ADA.
5. RELOCATE ALL ALARM SENSORS, ELECTRICAL AND PHONE OUTLETS, AND FIRE SPRINKLERS AS NECESSARY.
6. CONTRACTOR TO VERIFY ALL DIMENSIONS GIVEN WITH ACTUAL BUILDING CONDITIONS.

BREMCON OFFICE CONDOS

Johnson & Welch, P.C.  
162nd & Maple  
Omaha, NE

FLOOR PLAN  
MAIN LEVEL  
LOWER LEVEL



2823 N. 87th STREET  
OMAHA, NEBRASKA 68134  
402.556.3438

PROJECT: BREMCON002  
DATE: March 31, 2006  
© COPYRIGHT 2003

SHEET: A1.1